

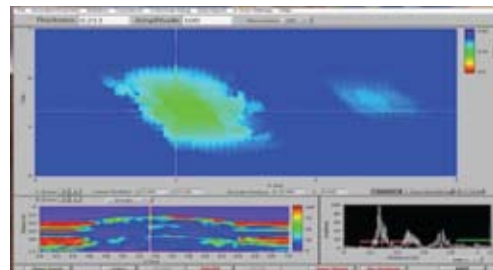
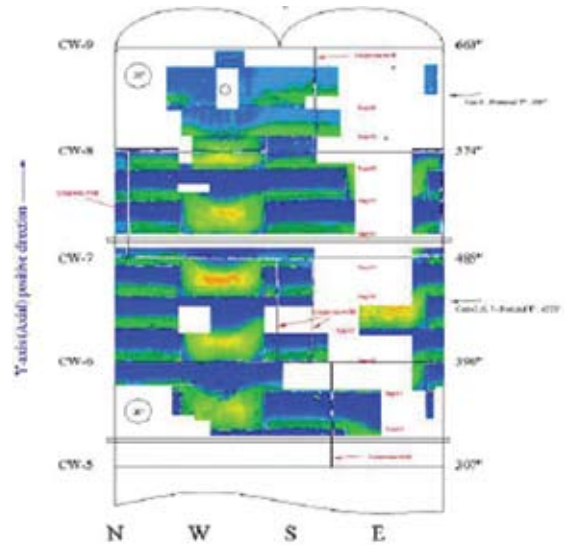


Corrosion Mapping

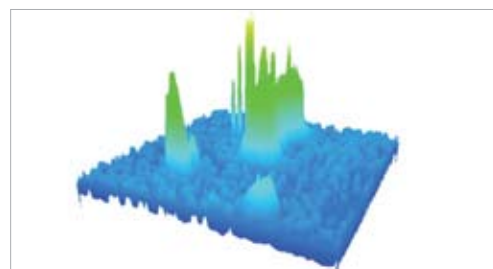
Corrosion and erosion can inflict significant damage and prove costly. Due to the risks involved, it's important to recognize corrosion damage early to assist in operational maintenance. Corrosion Mapping is a non-intrusive technique which can map material flaws/thicknesses. Using the Automated Magnetic Crawler, large areas can be inspected with the capability of detecting large and small diameter pitting, corrosion, erosion in piping, pressure vessels, tanks and flange raised faces. The process yields accurate information on the amount and location of corrosion.

ACCUSCAN - 2010

This equipment can reach scan speeds of up to 40"/second and can scan on diameters as small as 3" pipe and 24" long in length. The scanner comes with a very strong motor controller housing and both motor housings are sealed to protect against moisture damage. This scanning system is a slave system, which allows for easy access to the encoder feedback from the scanner and directing it into any UT system with encoder inputs.



CORROSION MAPPING



SCANNED AREA WITH CORROSION